



淄博雷浦陶瓷材料有限公司

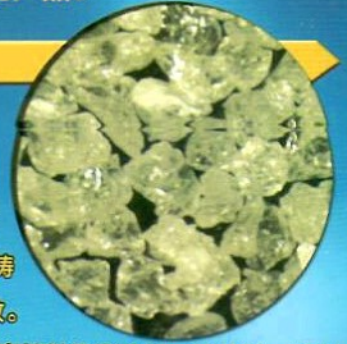
淄博雷浦陶瓷材料有限公司坐落于北方陶瓷名城淄博市，淄博是齐国的故都，蒲松龄的故乡，物华天宝，地杰人灵，交通发达。

本公司是从事白刚玉、铬刚玉、棕刚玉 等各种磨料，磨具，高级耐火材料以及煅烧氧化铝及微粉等系列产品，生产、开发、销售的专业性公司，品质优良，质量稳定，80%的产品销往日本、美国、韩国、台湾、中东、欧洲等世界20多个国家和地区，在广大的客户中享有较高的声誉，本公司技术科研力量雄厚，致力于磨料、磨具、耐火材料新技术，新产品的开发，可根据客户的要求生产不同规格，不同标准的产品。

白刚玉



以工业氧化铝粉为原料，于电弧炉中经2000度以上高温熔炼后冷却制成，经粉碎、整形，磁选去铁，筛分成多种粒度，其质地致密、硬度高，颗粒成尖角状，适用于制造陶瓷、树脂固结磨具以及研磨、抛光、喷砂、精密铸造（精铸专用刚玉）等，代号“WA”与国际通用标准、国家标准一致。白刚玉也可用于制造高级耐火材料，如大型钢包浇注料、中高档铁钩浇注料、喷补料、预制件等不定型耐火材料和刚玉砖、刚玉质及莫来石刚玉质匣钵、精炼用刚玉多孔塞砖、整体喷枪和复合水口、高温工业窑炉衬材等各种刚玉的制品。



项目	AL ₂ O ₃ %	SiO ₂ %	Fe ₂ O ₃ %	Na ₂ O%	体积密度	真密度
指标	>99	<0.01	<0.04	<0.45	>3.5	3.96g/cm ³

低钠白刚玉

项目	AL ₂ O ₃ %	SiO ₂ %	Fe ₂ O ₃ %	Na ₂ O%	体积密度	真密度
指标	>99.2	<0.01	<0.04	<0.1	>3.5	3.96g/cm ³

煅烧 α-AL₂O₃



- LP-1、该产品采用新型隧道窑高温煅烧而成，晶粒大、收缩率小、性能稳定，特别适用于陶瓷辊棒、电子基片、火花塞、α-β刚玉砖、氧化铝陶瓷、研磨抛光等产品的生产。
- LP-2、该产品采用回转窑高温快烧工艺，晶粒小、活性好、特别适用于高铝球、不定型耐火浇注料的生产，用LP-2配置的浇注料、流动性好，强度高，用LP-2生产的高铝球，体积密度高，磨耗低。
- LP-3、特别适用于高档不定型耐火浇注料的生产，晶粒小、活性高，加水量少，流动性好。以上LP-1、LP-2、LP-3都可根据用户要求加工成各种粒度，有325目、500目、1200目、5μm、2μm、1μm等



指标牌号	AL ₂ O ₃ (%)	Na ₂ O(%)	SiO ₂ (%)	Fe ₂ O ₃ (%)	α-AL ₂ O ₃ (%)	灼减(%)	真比重(g/cm ³)	原晶粒度(μm)
LP-1	>99.5	<0.1	<0.05	<0.01	>96	<0.1	>3.96	2-5
LP-2	>99.4	<0.3	<0.08	<0.02	>94	<0.1	>3.94	3-5
LP-3	>99.4	<0.3	<0.08	<0.02	>92	<0.2	>3.93	1

地址：山东省淄博市张店区傅山镇 电话：13355203212

<http://www.lpweifen.com/>



ZIBO LEIPU CERAMIC MATERIALS CO.,LTD.

ZIBO LEIPU CERAMIC MATERIALS CO.,LTD.in the north porcelain city of zibo city,Zibo is the ancient capital of Qi, the hometown of Pu song-ling, the things Tianbao, Traffic developed.

Our company is specialized production ,research and marketing of white corundum, pink fused alumina, brown fused alumina, etc all kinds of abrasives,fire-proof material and calcined alumina refractory and micro powder, etc. Product With Good Quality , stable quality, 80% of the products are mainly exported to Japan, the United States, South Korea, Taiwan, central and eastern Europe, such as more than 20 countries and regions of the world, enjoy higher reputation in the masses of customers, the company has strong technical research strength, committed to the new technology of abrasives, fire-proof material, the development of new products, can also according to customer demand production of different specifications, different standards of products.

White Aluminum Oxide



The raw material is industry alumina powder, being fused in electric arc furnace at more than 2000 centigrade. Then being rushed and shaped, getting ride of iron by magnetic separation, sieving different grit size. It is with good density, hardness, angular shape, which make it suitable for producing vitrified and resin bonded abrasives, grinding, polishing, sandblasting, precision manufacturing and so on. The code is "WA", in accordance with international general standard and national standard. White aluminum oxide is also used for producing high glass refractory material, such as large ladle castable, iron hook castable, gunning refractory, unshaped refractory, corundum brick and saggar, porous brick, monolithic lance and combined nozzle, high temperature industry furnace bosom piece and so on.



Project	AL ₂ O ₃ %	SiO ₂ %	Fe ₂ O ₃ %	Na ₂ O%	Bulk density	True density
Index	>99	<0.01	<0.04	<0.45	>3.5	3.98g/cm ³

Low Na₂O

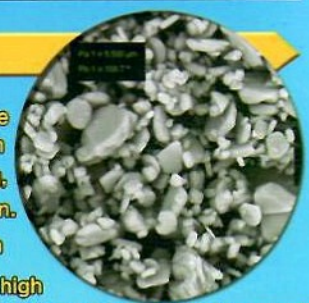
White Aluminum Oxide

Project	AL ₂ O ₃ %	SiO ₂ %	Fe ₂ O ₃ %	Na ₂ O%	Bulk density	True density
Index	>99.2	<0.01	<0.04	<0.1	>3.6	3.98g/cm ³

calcined α-AL₂O₃



- LP-1、 being produced by calcined at high temperature in new type of tunnel kiln. Large crystal grain, small shrinkage, stable performance, specially used for ceramic roller, electronic substrate, spark plug, α-β corundum brick, alumina ceramic, grinding, polishing and so on.
- LP-2、 being used fast firing technology with rotary kiln at high temperature. Small crystal grain, high activity, specially suitable for high alumina ball, unshaped refractory castable. The castable with LP-2 is with good fluidity, good strength. High alumina ball with LP-2 is with high volume density, low abrasion.
- LP-3、 specially suitable for producing high grade unshaped castable, small crystal grain, high activity, good fluidity.



The above LP-1, LP-2, LP-3 are all customized as per customer's requirement. 325 mesh, 500 mesh, 1200 mesh, 5 μm, 2 μm, 1 μm is available.

Index Grade	AL ₂ O ₃ (%)	Na ₂ O (%)	SiO ₂ (%)	Fe ₂ O ₃ (%)	α-AL ₂ O ₃ (%)	Igloss (%)	True specific gravity (g/cm ³)	Original grain size (μm)
LP-1	>99.5	<0.1	<0.05	<0.01	>96	<0.1	>3.96	2-5
LP-2	>99.4	<0.3	<0.08	<0.02	>94	<0.1	>3.94	3-6
LP-3	>99.4	<0.3	<0.08	<0.02	>92	<0.3	>3.93	1

Add: Fushan Town, Zhangdian District, Zibo City, Shandong Province.

Tel : 13355203212

http://www.lpweifen.com/